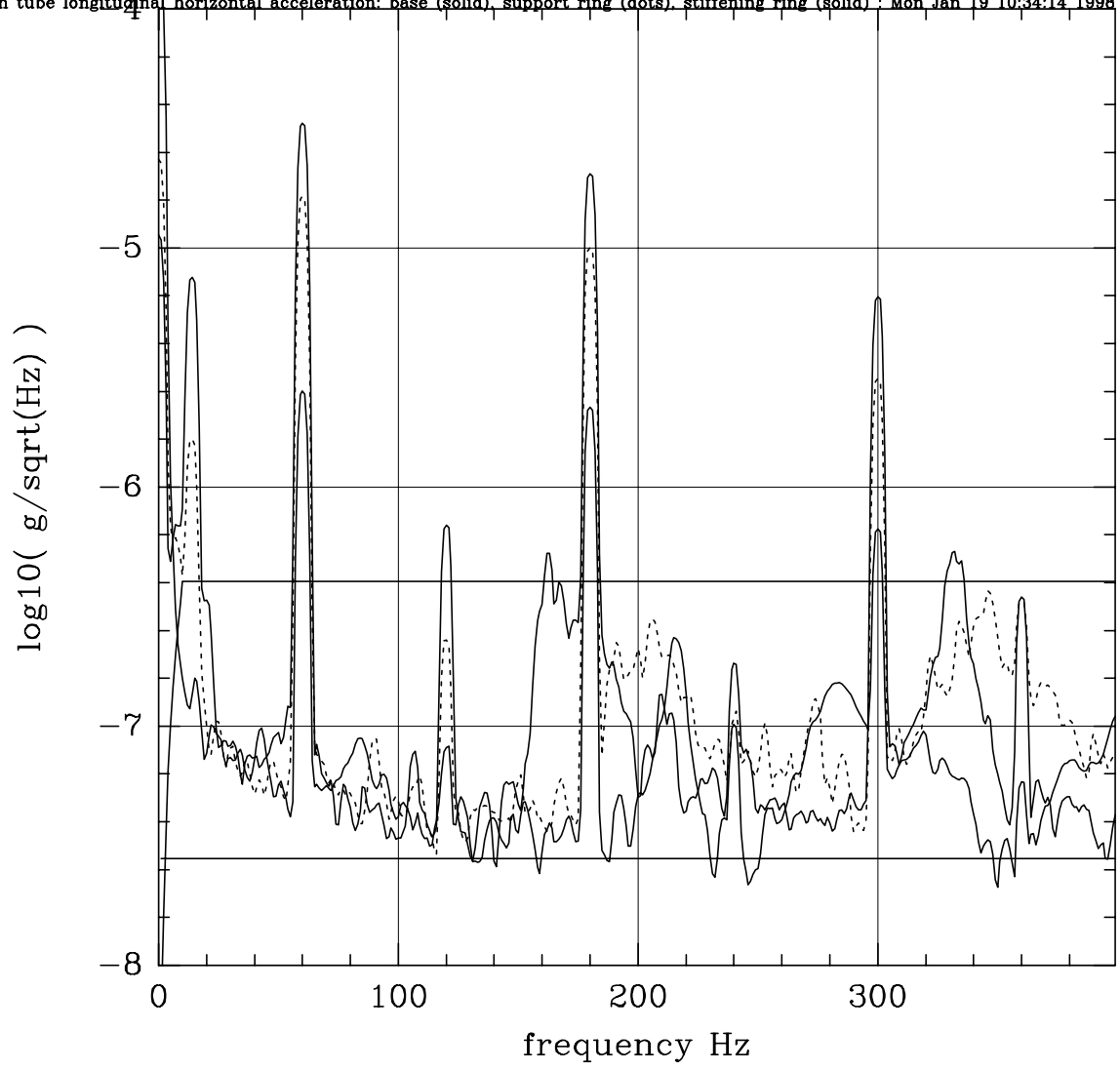
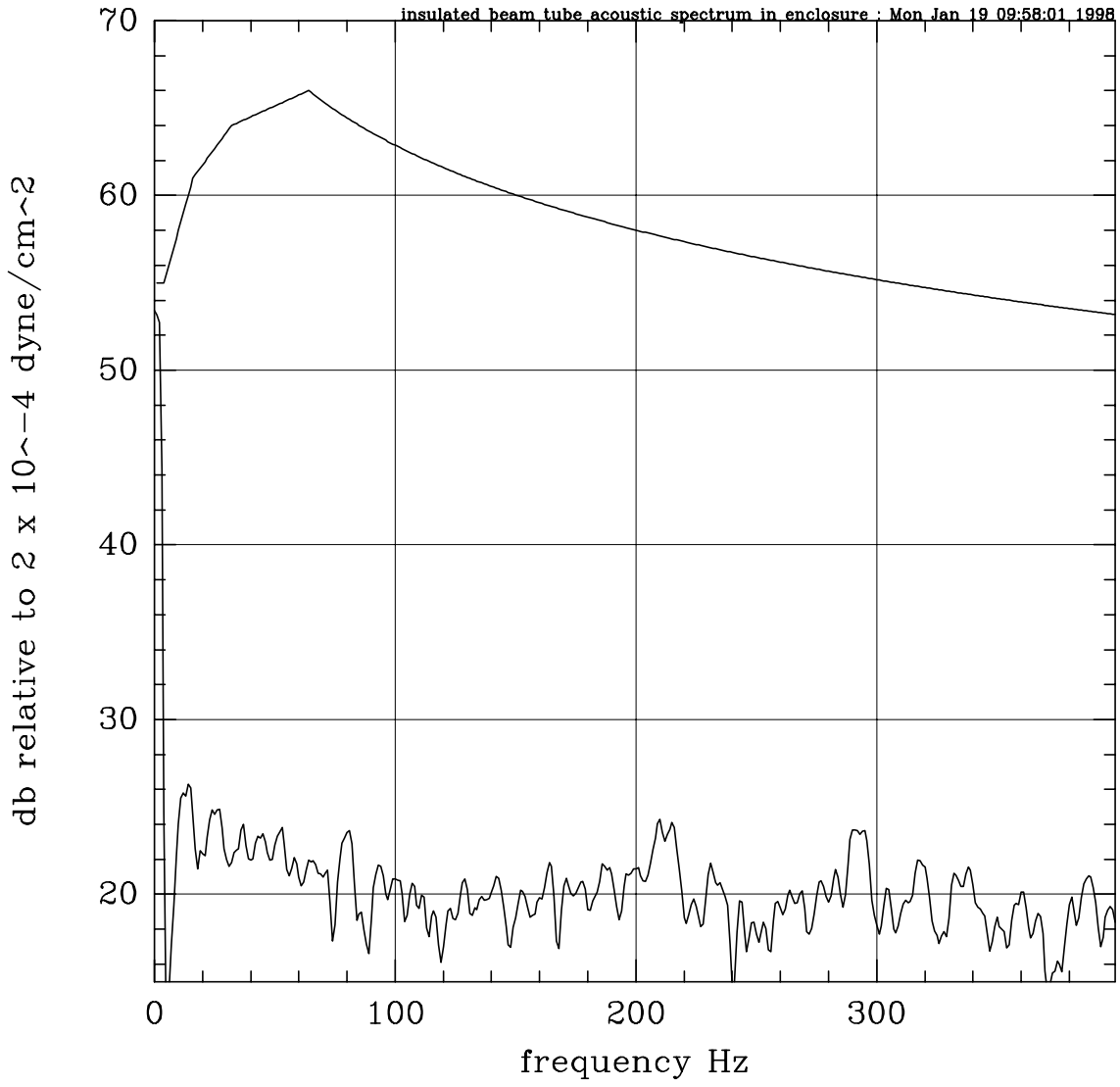
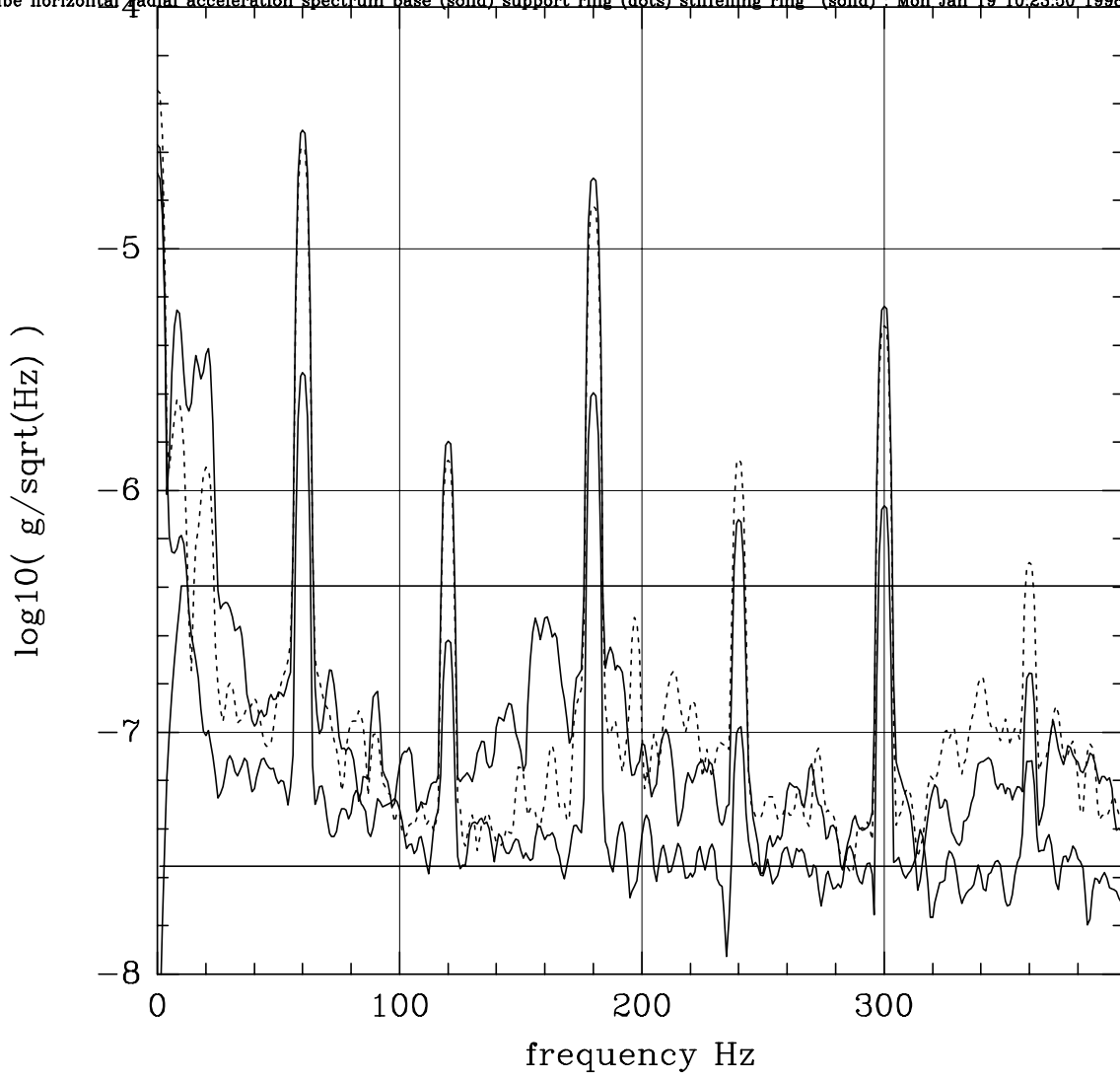


insulated beam tube longitudinal horizontal acceleration: base (solid), support ring (dots), stiffening ring (solid) : Mon Jan 19 10:34:14 1998





Insulated beam tube horizontal radial acceleration spectrum base (solid) support ring (dots) stiffening ring (solid) : Mon Jan 19 10:23:50 1998



insulated beam tube vertical acceleration spectrum: base (solid), support ring (dots), stiffening ring (solid) : Mon Jan 19 10:13:20 1998

